

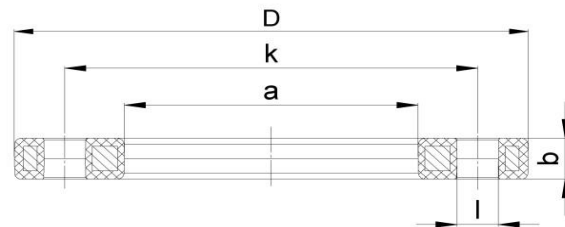
## BACKING FLANGE, PP-STEEL ANSI

03 Update - 05/2022

### TECHNICAL DATA

Article No	001 530 7121 0315
d (mm)	315
DN (mm)	300
Inch	12"
D (mm)	487
a (mm)	338
k (mm)	431,8
b (mm)	32
l (mm)	25
Weight (Kg)	14,41
Box Quantity (pcs)	1
Box Dimension (pcs)	31x50x3,7

### INJECTION MOULDED



### IDENTIFICATION OF PRODUCT

D	315x12"
BOLT CIRCLE	150 lbs
RAW METARIAL	PP %30 Glass-fibre Reinforced with steel ring UV-Resistant suitable for outdoor use
TRADEMARK	NTG
EXECUTION	Injection Moulded
PRESSURE CLASS	Class 150
STANDARD	ANSI ASME B16,5 Class150 ASTM D4024 BS 1560 BS EN 1759

### SPECIFICATION

NUMBER OF HOLES	12
BOLT	M 22
TIGHTENING TORQUE (Nm)	100

Tolerance on diameters and thickness according to the standards. The other dimensions are specialized. Tolerance  $\pm 5\%$ . NTG PLASTIK reserves all the right to change any information without giving prior notice. The production, distribution and utilization of this document without explicit authorization is prohibited.